

DVDO PrecisionSDI™

Serial Digital Interface Video Input Module for
the iScan™ HD/HD+ Video Scaling Engine

Installation Guide

How to install, set up, and use your module

PRECISION
SDI
Serial Digital Interface

DVDO
BY ANCHOR BAY TECHNOLOGIES

TABLE OF CONTENTS

DVDO PrecisionSDI™ Video Input Module Installation Guide

| | |
|-------------------------|----|
| Introduction | 3 |
| Installation and Set-Up | 4 |
| Updating your Software | 7 |
| Troubleshooting | 13 |
| Appendix - Error Codes | 14 |
| Warranty Information | 15 |

I N T R O D U C T I O N

Thank you for purchasing the DVDO PrecisionSDI™ Serial Digital Interface Video Input Module. Upgrading your iScan™ HD/HD+ for SDI digital video input capability is simple, and this Installation Guide will step you through the process.

This installation process is in two parts: hardware and software. For the hardware installation, you will need a few basic tools, including a Phillips-head screwdriver and a pair of long-nose pliers. For the software installation, you will need a PC or laptop computer running the Microsoft Windows operating system, and this computer must also have an RS-232 serial data port on a 9-pin connector.

Should you have any issues or problems during installation, please contact your Authorized DVDO Reseller for assistance.

You can also contact DVDO directly for help:

Email: Help@DVDO.com

Toll-Free (USA only): 1-866-423-DVDO

INSTALLATION AND SET-UP

Contents

- SDI Card
- Bulkhead BNC connector with nut and washer
- Stand-offs (qty. 2)
- BNC-to-BNC Cable
- Hole-plug screws (qty. 2)
- RS-232 serial data cable

Installing the PrecisionSDI module into your iScan HD/HD+

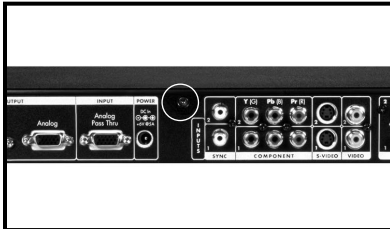
- 1 Remove the iScan HD/HD+ top cover. To do this,
 - a. Remove three screws on each side of the unit.
 - b. Remove two screws on the top of the unit.



Step 1a



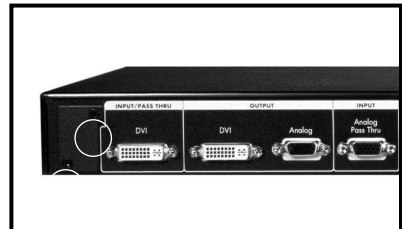
Step 1b



Step 1c

- 2 Remove the metal plate that covers the hole for the SDI BNC connector.

- c. Remove one screw at the rear of the unit.
- d. Lift the top cover from the rear of the unit and set it aside.



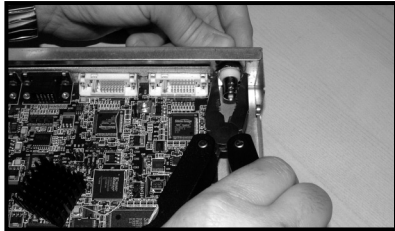
Step 2

Installation and Set-Up (continued)

- 3 Mount the bulkhead BNC connector. (a,b) Then plug the two screwholes left after the plate removal, with round-head screws from the SDI kit.



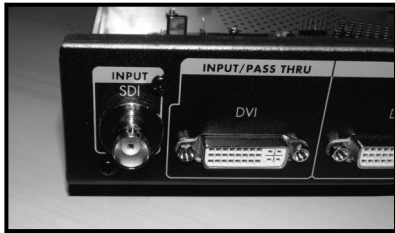
Step 3a



Step 3b

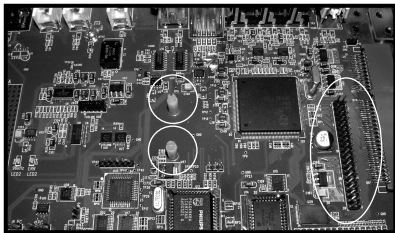


Step 3c

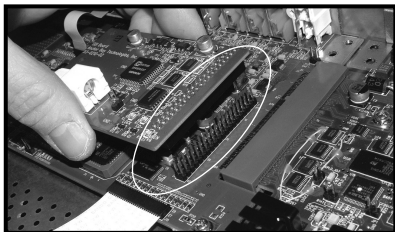


Step 3c

- 4 Locate the Expansion Module connector (40 pin IDC-type header) on the Video Input board.
- 5 Locate the mounting holes to the right of the Expansion Module connector.
- 6 Snap the stand-offs into each mounting hole.
- 7 Mount the SDI module onto the Expansion Module connector. Make sure that the stand-offs are lined up exactly with the two mounting holes on the SDI module.



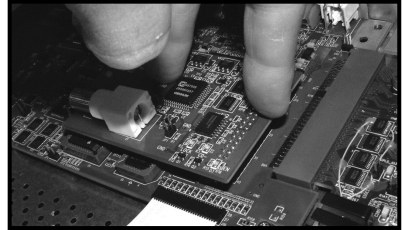
Steps 4 & 6



Steps 7 & 8

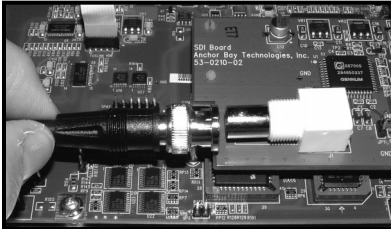
Installation and Set-Up (continued)

- 8 Make sure the 40-pin connector on the SDI card is aligned with the connector on the Video Input board.
- 9 Push the module down to ensure a proper mate with the stand-offs.

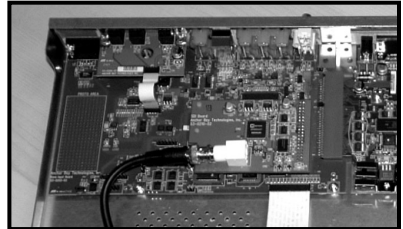


Step 9

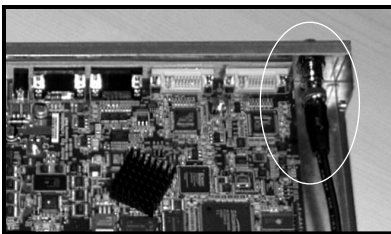
- 10 Connect one end of the BNC cable to the SDI module BNC connector.



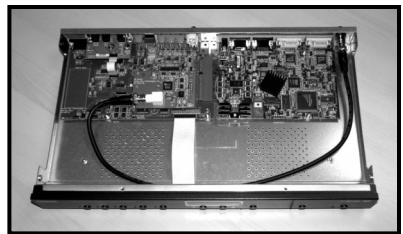
Step 10



- 11 Connect the other end of the BNC cable to the bulkhead BNC connector inside the enclosure.



Step 11



- 12 Mount the top cover back onto the unit.
- 13 Power up the iScan HD and upgrade the software, if required.*

* Only iScan HDs with software versions earlier than 3.4-1.09A require a software update to support the PrecisionSDI Video Input Module. The iScan HD+ is shipped with software that supports the PrecisionSDI™ Video Input Module. No software update is necessary.

UPDATING YOUR SOFTWARE

for iScan HD only, see note on page 6

iScan HD Software Update instructions

The iScan HD firmware can be updated using a PC with a serial port. We recommend a serial port terminal program called Tera Term Pro (Version 2.3) that we provide on our website.

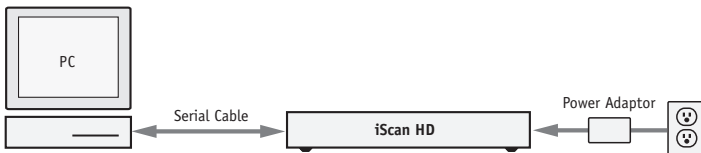
Hardware setup

What's needed:

- DB9 Male to Female extension (1:1) Serial Cable
- iScan HD with Power Supply

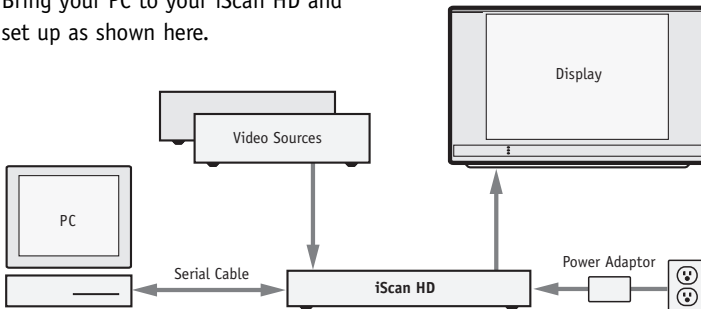
If you have NOT already installed your iScan HD into your home theater system:

Set up the iScan HD as shown below.



If you HAVE already installed your iScan HD into your home theater system:

Bring your PC to your iScan HD and set up as shown here.



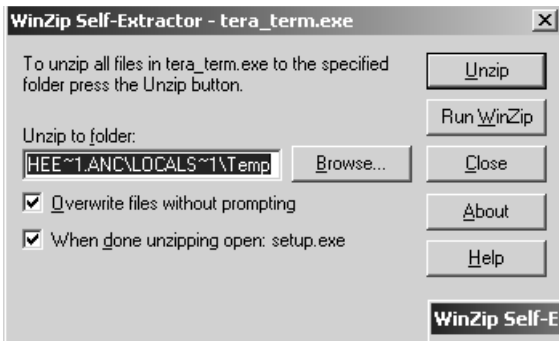
- Connect Serial Port cable between PC and iScan HD.
- Turn the PC and iScan HD on.

Software Update (continued)

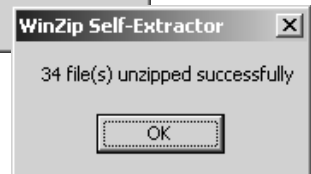
The CD that comes with your SDI kit includes the Tera Term Pro software (teraterm_ext) and the .abt file that is needed to update your iScan HD. You may want to check the www.dvdo.com website for the latest software release.

To install Tera Term Pro on your PC

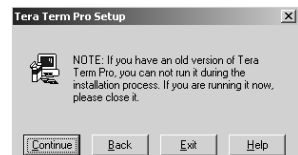
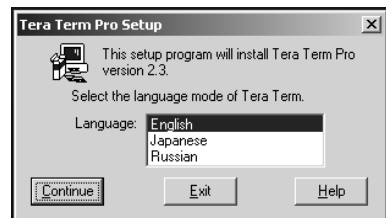
- 1 Double click on 'tera_term.exe'.
- 2 Click 'Unzip'.
- 3 This action unzips the program to a temporary folder.



- 4 Click 'OK'. This starts the Tera Term Pro setup program.

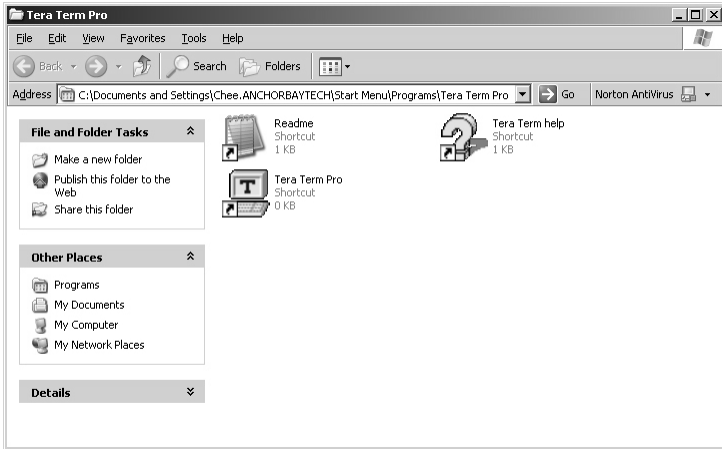


- 5 Select the preferred language and click 'Continue'.
- 6 Click 'Continue' unless an old version of Tera Term Pro is currently running.



Software Update *(continued)*

- 7 Click 'Continue' to install Tera Term Pro in the default Program directory.

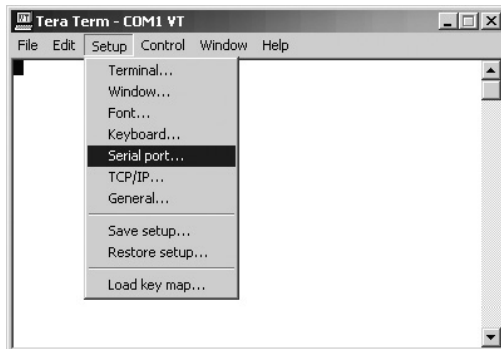


- 8 Close this window and click 'OK' to exit the setup program.

Using Tera Term Pro

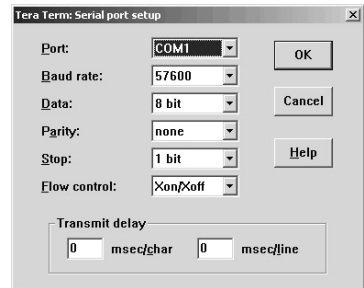
Make sure that no other program is using the serial port that's connected to the iScan HD.

- 1 Run Tera Term Pro from the Program Menu.
- 2 Select 'Serial Port' from the Setup menu.



Software Update *(continued)*

- 3 Tera Term Pro has been configured to communicate directly with the iScan HD through the serial port COM1. See below. Select the correct COM port if the serial cable is not connected to COM1.
- 4 Click 'OK'. Now the serial port setup is completed.
- 5 Tera Term Pro is now ready to send the new software file to the iScan HD.



Setting up the iScan HD for software update

There are two ways to perform software update: using the Front Panel buttons or using the remote control and On-Screen Display (OSD).

If the iScan HD has not been installed in your home theater system, just use the Front Panel buttons as described below.

Using the Front Panel buttons

- 1 Press the **Configuration** button repeatedly until the display shows "SWUP" (SoftWare UPdate).
- 2 Press the **Up** or **Down** arrow buttons until the display shows "YES".
- 3 Press the **Enter/Exit** button to confirm the software update.
- 4 The Front Panel Display will show 'LOAD'.

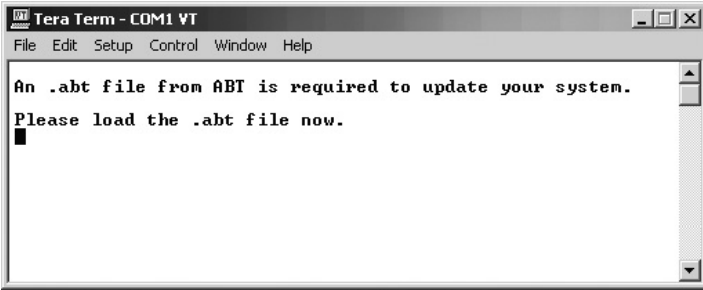
Using OSD and Remote Control

- 1 Press **Menu** button.
- 2 Select Configuration -> Software Update -> Yes.
- 3 Confirm by pressing the **Enter** button.
- 4 The Front Panel Display will show 'LOAD'.

Software Update *(continued)*

Completing the update process

- 1 On the Tera Term window, you will see the following message.

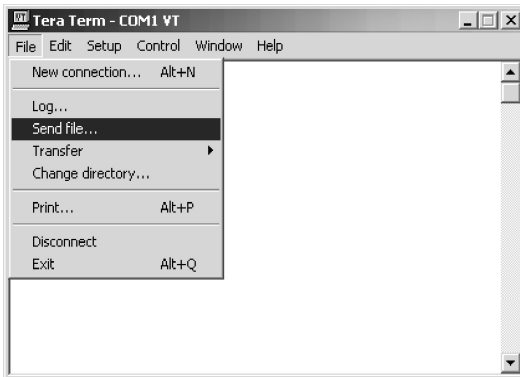


Important Note:

You can still cancel the download operation at this point. There are two ways to do this.

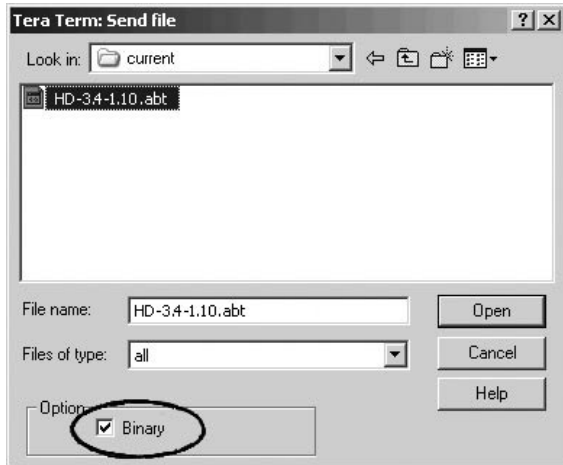
- *Do nothing for about 5 minutes. After this time the iScan HD will revert back to normal operations with the current software.*
- *Unplug the power cord from the iScan HD and then plug it back in again. The iScan HD will revert back to normal operations with the current software.*

- 2 To update the system software select 'Send File' from the file menu.



Software Update (continued)

- 3 Make sure Binary mode is selected.



- 4 Locate the '.abt' file to download. Only files with a '.abt' extension should be loaded. If any other file is loaded, an error will occur. If this happens see the troubleshooting section.
- 5 Click the 'Open' button to send the file.
- 6 Data is now being transferred to your iScan HD. You should see the word "BUSY" scrolling on the Front Panel. You will also see the download status on your PC.
- 7 When the update is complete you will see 'VRFY' momentarily displayed on the Front Panel Display. This is the iScan HD checking its software to be sure it is correct. The download process may take up to 5 minutes to complete.
- 8 When the update process is complete, the front panel light will turn green.
- 9 Your iScan HD with your new PrecisionSDI Input Module upgrade is now ready to use. To select the SDI input, use the SDI button on the remote control, or select the SDI input using the front panel button labeled **Input Select**.

TROUBLESHOOTING

The front panel displays 'LOAD' even after cycling the system power by unplugging the iScan HD and plugging it in again.

If this problem occurs you must load a .abt file into your iScan HD. Download a .abt file from www.dvdo.com and load it according to the procedure above steps 4 through 6.

The front panel displays ERR2.

Check to be sure the correct file was chosen. Only files with the .abt extension are valid for updating the iScan HD.

Once the correct file is located, reset the system by unplugging it and plugging it in again. You can follow the software update procedure again to update the system with a valid .abt file.

If after making a second attempt and the display still shows ERR2, check the file to be sure it was not corrupted during download. To check the file make sure the size of the file is correct. If you are not sure it is suggested to download the file again.

The front panel displays ERR7.

This error means that the transmission of data to the iScan HD has been interrupted. This could be caused by the terminal program being paused or canceled. Another cause of this error is that the serial port has become disconnected or has a faulty serial cable. If you have paused the terminal you can just restart it and the download will resume. Otherwise you must cycle the system power by unplugging it and plugging it in again.

A P P E N D I X A

iScan HD Bootloader Error Codes

These error codes will appear in the front panel display (FPD) of the iScan HD.

| FPD shows | Type | Description | Possible causes |
|-------------|-------------------------|---|---|
| ERR0 | Unknown Error | An unknown error occurred. | 1) Software bug. |
| ERR1 | File checksum error | Wrong checksum received at the end of an ASCII file record. | 1) Wrong file loaded. 2) Corrupted file loaded. |
| ERR2 | Bad record type | Record in ascii data is incorrect. | 1) Wrong file loaded. 2) Corrupted file loaded. |
| ERR3 | Flash program error | Error programming flash device | 1) Wrong file loaded 2) Hardware failure |
| ERR4 | Device 1 checksum error | Calculated checksum for device 1 does not match expected checksum | 1) Firmware update interrupted 2) Hardware failure |
| ERR5 | Device 2 checksum error | Calculated checksum for device 1 does not match expected checksum | 1) Firmware update interrupted 2) Hardware failure |
| ERR6 | Erase timeout | Erasing flash device took more than 30 seconds | 1) Hardware failure |
| ERR7 | Program timeout | Programming a byte in flash took more than 500ms | 1) Hardware failure |
| ERR8 | Buffer empty timeout | RS232 data buffer was empty for more than 500ms | 1) RS232 communication broken. |

WARRANTY

LIMITED ONE-YEAR WARRANTY

Anchor Bay Technologies, Inc. warrants only to the initial purchaser of this product for a period of one year from purchase from an Authorized DVDO Reseller, that the product will be free of electrical and mechanical defects that materially affect the product's operation as described in this Product Guide. Anchor Bay Technologies' sole obligation shall be, at its sole option, to repair or replace the product with equivalent or better, or to refund the net original purchase price.

DISCLAIMER OF WARRANTY

ALL IMPLIED WARRANTIES OF MERCHANTABILITY OR FITNESS FOR A PARTICULAR PURPOSE ARE LIMITED TO ONE YEAR FROM PURCHASE; ALL OTHER EXPRESS OR IMPLIED CONDITIONS, REPRESENTATIONS AND WARRANTIES, INCLUDING ANY IMPLIED WARRANTY OF NON-INFRINGEMENT, ARE DISCLAIMED. Some jurisdictions do not allow limitations on how long an implied warranty lasts, so the above limitation may not apply to you. This warranty gives you specific legal rights, and you may also have other rights, which vary by jurisdiction.

LIMITATION OF LIABILITY

TO THE EXTENT NOT PROHIBITED BY LAW, IN NO EVENT WILL ANCHOR BAY TECHNOLOGIES, INC. OR ITS SUPPLIERS BE LIABLE FOR ANY LOST REVENUE, PROFIT OR DATA, OR FOR SPECIAL, INDIRECT, CONSEQUENTIAL, INCIDENTAL, OR PUNITIVE DAMAGES, HOWEVER CAUSED REGARDLESS OF THE THEORY OF LIABILITY, ARISING OUT OF OR RELATED TO THE USE OF OR INABILITY TO USE THE PRODUCT, EVEN IF ANCHOR BAY TECHNOLOGIES, INC. HAS BEEN ADVISED OF THE POSSIBILITY OF SUCH DAMAGES. IN NO EVENT WILL ANCHOR BAY TECHNOLOGIES, INC.'S LIABILITY TO YOU, WHETHER IN CONTRACT, TORT (INCLUDING NEGLIGENCE), OR OTHERWISE, EXCEED THE AMOUNT PAID BY YOU FOR THE PRODUCT. The foregoing limitations will apply even if any warranty or remedy provided to you fails of its essential purpose. Some jurisdictions do not allow the exclusion or limitation of incidental or consequential damages, so the above limitation or exclusion may not apply to you.

Disclaimer

This document is provided for technical information for the user. It does not create any warranty with respect to the product, and does not modify or enhance the terms of the warranty that may accompany this product. Anchor Bay Technologies, Inc. reserves the right to modify the information in this document as necessary. Anchor Bay Technologies, Inc. holds no responsibility for any errors that may appear in this document. Customers should take appropriate action to ensure their use of the products does not infringe upon any patents. Anchor Bay Technologies, Inc. respects valid patent rights of third parties.

Trademarks

The DVDO® and iScan™ trademarks are licensed exclusively to Anchor Bay Technologies Inc., in the United States of America and all other countries worldwide. All products bearing the 'DVDO' and 'iScan' trademarks are based upon technologies, architectures, and product designs originally created and developed by Anchor Bay Technologies Inc., Silicon Image Inc., and DVDO Inc. All product or other names or marks referenced herein are trademarks or registered trademarks of their respective owners, and are the properties of their respective owners, with all rights reserved.

DVDO PrecisionSDI™

Serial Digital Interface Video Input Module
for the iScan™ HD/HD+ Video Scaling Engine
Installation Guide

December 2004
English

Installation Guide version 1.2
ABT P/N 75-0227-03



Anchor Bay Technologies Inc.

300 Orchard City Drive, M/S 131
Campbell, California 95008

email support@dvdo.com
web www.dvdo.com
toll free 866.423.DVDO
fax 408.379.3845